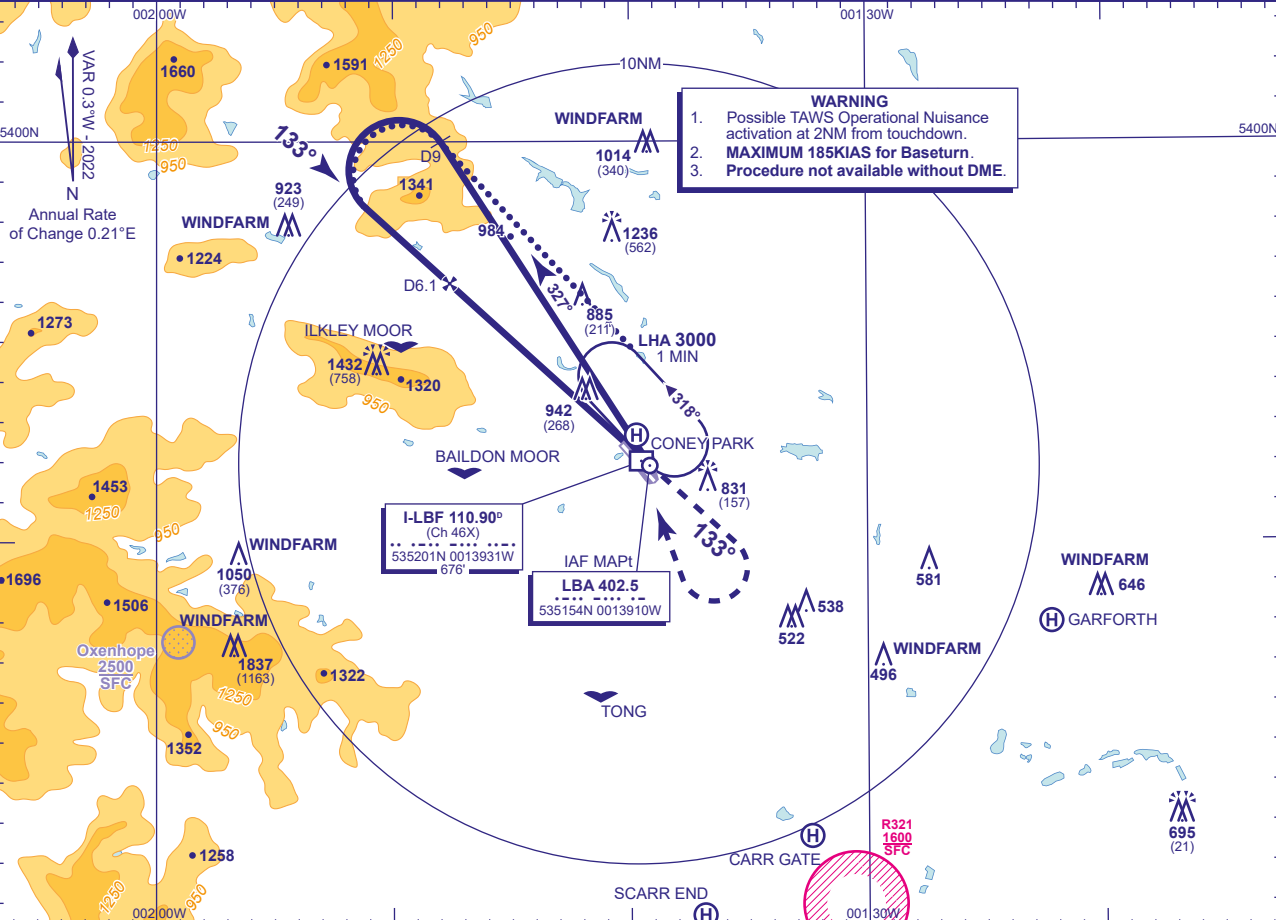


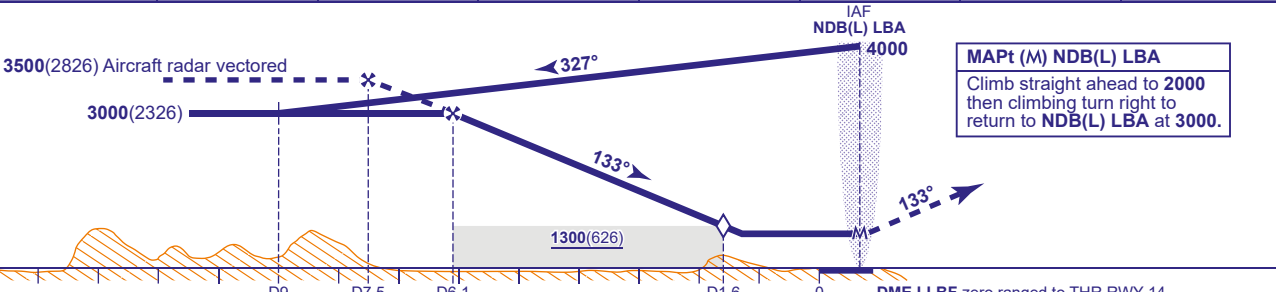
INSTRUMENT APPROACH - ICAO

LEEDS BRADFORD
NDB(L)/DME Z
RWY 14
(ACFT CAT C,D)

	MSA 25NM LBA	APP	134.580	LEEDS APPROACH	AD ELEVATION	682
		TWR	120.305	LEEDS TOWER	THR ELEVATION	674
		RAD	134.580	LEEDS RADAR	OBSTACLE ELEVATION 1837 AMSL (1163) (ABOVE THR)	
			125.380	LEEDS DIRECTOR		
	MSA 10NM LBA	ATIS	118.030	LEEDS INFORMATION	BEARINGS ARE MAGNETIC	
						TRANSITION ALTITUDE 5000



RECOMMENDED PROFILE Gradient 6.1%, 370FT/NM							
DME I-LBF	7	6	5	4	3	2	1.6 (SDF)
ALT(HGT)	3340(2666)	2960(2286)	2590(1916)	2220(1546)	1840(1166)	1470(796)	1300(626)



Aircraft Category		C	D	Rate of descent	G/S KT	160	140	120	100	80
OCA (OCH)	Procedure	1200(526)	1200(526)		FT/MIN	990	870	750	620	500
VM(C)OCA (OCH AAL)	Total Area	1420(738)	1650(968)							

ALTERNATIVE PROCEDURE EXTENDED HOLDING PATTERN Overhead NDB(L) LBA in holding pattern, turn left and descend on extended outbound leg to 3000(2326). At I-LBF DME 9 turn left onto FAT. When established continue as Main Procedure.

- NOTES 1 FAT offset by 5° from RWY C/L.
2 Lowest altitude to commence procedure from hold is 3000.
3 Due to controlled airspace constraints, aircraft may temporarily leave controlled airspace in the baseturn.

CHANGE (8/25): AD ELEVATION. MINIMA. MSA REVISED.